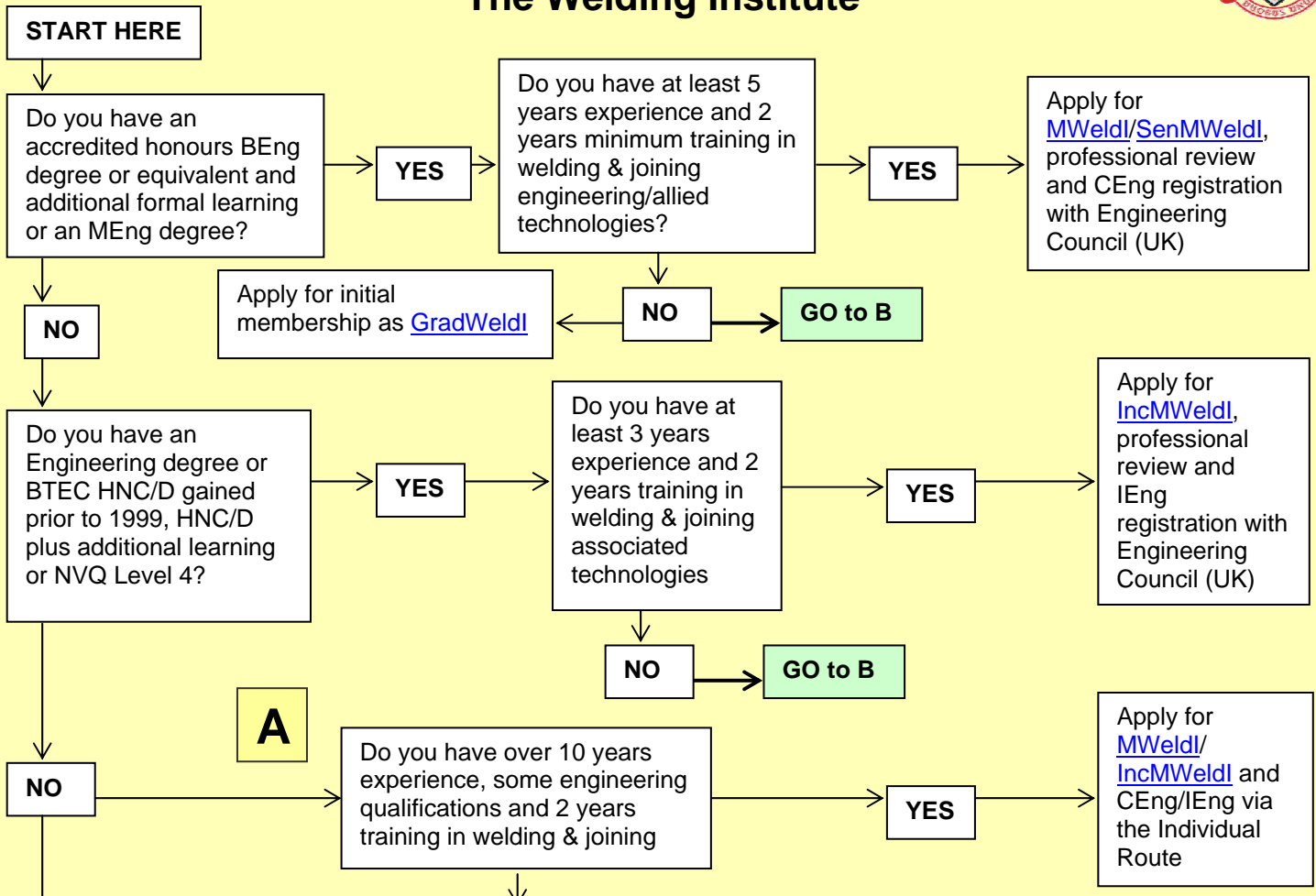
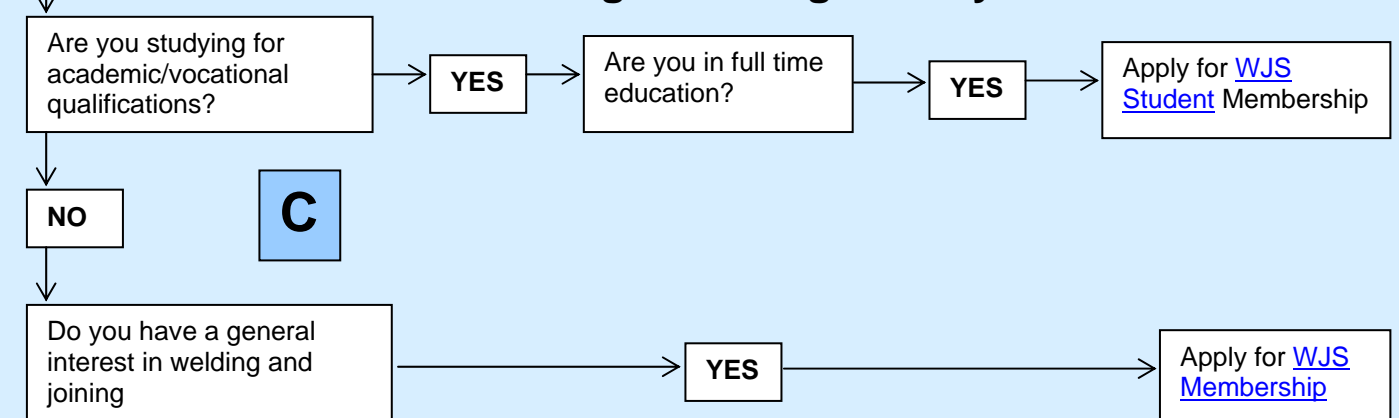




The Welding Institute



The Welding & Joining Society



MEMBERSHIP DOCUMENTS

FACT SHEET I	
IA	Requirements for the Class of Fellow (FWeldI)
IB	Requirements for the Class of Senior Member (SenMWeldI)
IC	Requirements for the Class of Member (MWeldI)
ID	Requirements for the Class of Incorporated Member (IncMWeldI)
IE	Requirements for the Class of Technician (TechWeldI)
IF	Requirements for the Class of Senior Associate (SenAWeldI)
IG	Requirements for the Class of Graduate (GradWeldI)
FACT SHEET II	
IIA	Chartered Engineers Registration
IIB	Incorporated Engineers Registration
FACT SHEET III	Engineering Technicians Registration
FACT SHEET IV	
IV	Chartered Engineer and Incorporated Engineer Registration linked to Membership of The Welding Institute via the Individual Route
IVA	Guidance notes on the preparation and submission of a technical report
FACT SHEET V	Professional Review Interview
FACT SHEET VI	Open University Degrees
FACT SHEET VII	Engineering Council (UK) Examination
FACT SHEET VIII	Guidance Notes for Professional Advisers/Assessors for the Individual Route – <i>limited circulation only</i> -
FACT SHEET IX	European Engineering (Eur Ing) Registration
FACT SHEET X	Membership Quick Guide
FACT SHEET XI	Outline of training and qualifications in welding
FLOW CHART	Routes to Professional Membership
TWI/PM/1A	Application for election to a class of Professional Membership of The Welding Institute PLEASE READ THE APPLICATION GUIDANCE NOTES (TWI/PM/3) PRIOR TO COMPLETING THIS FORM
TWI/PM/2.1	Application for election in the class of Graduate
TWI/PM/3	Application for Professional Membership (Guidance Notes)



**The Professional Division
The Welding Institute
Granta Park, Great Abington,
Cambridge CB21 6AL, UK
Tel: + 44 (0) 1223 899000
Fax: + 44 (0) 1223 894219
E-mail: twi_professional@twi.co.uk
Website: www.twiprofessional.com**